



BALANCED PRESSURE THERMOSTATIC STEAM TRAP

MODEL LV6 Clean Steam Trap

STAINLESS STEEL THERMOSTATIC STEAM TRAP FOR PURE AND CLEAN STEAM SYSTEMS

Features

Balanced pressure thermostatic steam trap recommended for use in reactors, sterilizers and distribution lines in clean and pure steam systems.

1. Free-draining, virtually crevice-free design minimizes the possibility of bacteria buildup.
2. Patented "fail open" feature minimizes interruption of critical operation.
3. Large orifice provides high air venting capacity for rapid start-up and resists plugging to ensure continuous operation.
4. Compact for easy installation.
5. Maintainable design lowers cleaning costs.
6. LV6-P polished to 0.8 μm Ra inside and 1.2 μm Ra outside, with an electro-polish option to further resist bacterial growth.



Specifications

Model	LV6-CE	LV6-SF	LV6-P*
Connection	Clamp End / Tube End		
Size	15, 20, 25 mm (ISO) ½", ¾", 1" (ASME-BPE) / 8, 10, 15, 20, 25 mm (ISO)		
Maximum Operating Pressure (MPaG) PMO	0.6		
Minimum Operating Pressure (MPaG)	0.01		
Maximum Back Pressure	90 % of Inlet Pressure		
Maximum Operating Temperature (°C) TMO	165		
Subcooling of X-element Fill (°C)	Up to 6		
X-element type (for Clean Steam Traps)	Standard	Free-draining	Free-draining (electro-polished)
Clamp Type	2-Piece Clamp (Buff Polished)		3-Piece Clamp (Buff Polished)
Finishing (Internal / External)*	Natural Machining	0.8 μm Ra / 1.2 μm Ra Fine Machining	0.8 μm Ra / 1.2 μm Ra Buff Polished

* LV6-EP with 0.4 μm Ra electro-polishing available on request

1 MPa = 10.197 kg/cm²

PRESSURE SHELL DESIGN CONDITIONS (**NOT** OPERATING CONDITIONS): Maximum Allowable Pressure (MPaG) PMA: 1.0

Maximum Allowable Temperature (°C) TMA: 185



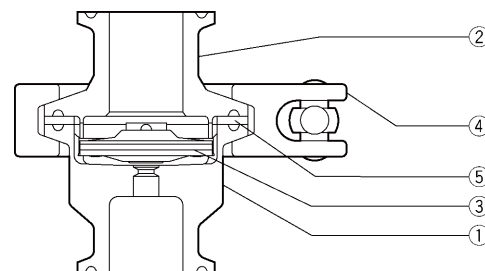
CAUTION

To avoid abnormal operation, accidents or serious injury, DO NOT use this product outside of the specification range. Local regulations may restrict the use of this product to below the conditions quoted.

No.	Description	Material	JIS	ASTM/AISI*
①	Lower Body	Stainless Steel	SUS316L	AISI316L
②	Upper Body	Stainless Steel	SUS316L	AISI316L
③	X-element	Stainless Steel	SUS316L	AISI316L
④	Body Clamp	Cast Stainless Steel	SCS13A	A351 Gr.CF8
⑤	Body Gasket**	High-performance Fluorine Resin	—	—

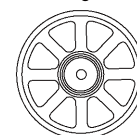
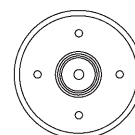
* Equivalent ** Body gasket is GYLON BIO-PRO; complies with FDA 21 CFR 177.1550, USP Class VI and EN 1935.

GYLON BIO-PRO is a registered trademark of Garlock GmbH. Material certificates to ISO 10474 2.2 or 3.1B available for major components, contact TLV for details



Standard X-element

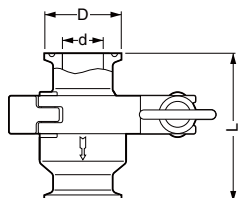
Free-draining X-element



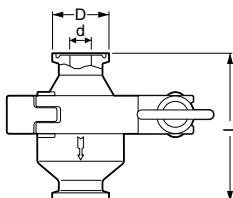
Dimensions

● LV6-CE/LV6-SF/LV6-P Clamp End

ISO 2852-Clamp/ISO 2851



ASME-BPE
(Tri-Clamp Compatible)



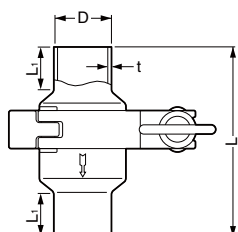
LV6-CE/LV6-SF/LV6-P Clamp End* (mm)

Size	L	φD	φd	Weight (kg)
15 (1/2")	65	34 (25)	17.2 (9.52)	0.5
20 (3/4")			21.3 (15.87)	0.55
25 (1")		50.5	23 (22.10)	0.6

* Fits to ISO 2852-Clamp / ISO 2851, ASME-BPE (Tri-Clamp compatible), other standards available
() ASME-BPE (Tri-Clamp compatible)

● LV6-CE/LV6-SF/LV6-P Tube End

ISO 1127

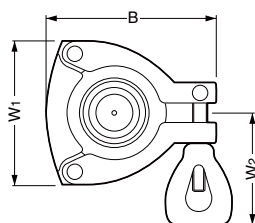
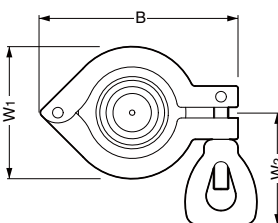


LV6-CE/LV6-SF/LV6-P Tube End* (mm)

Size	L	L1	φD	t	Weight (kg)
8	90	20	13.5	1.6	0.5
10			17.2		0.55
15			21.3		
20			26.9		
25			33.7	2.0	0.6

* Fits to ISO 1127, other standards available

● Body Clamp



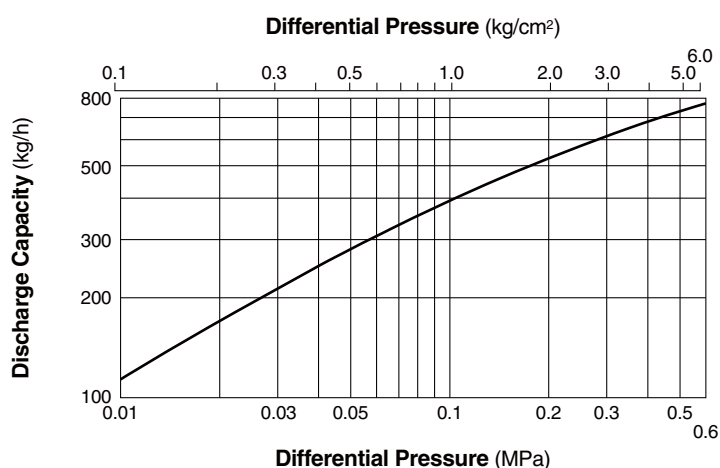
Body Clamp (mm)

Size	2-Piece: LV6-CE / LV6-SF			3-Piece: LV6-P		
	B*	W1*	W2*	B*	W1*	W2*
8	92	62	55	82	70	55
10						
15						
20						
25						

* Approximate dimension

Tri-Clamp is a registered trademark of Tri-Clover Inc.

Discharge Capacity



1. Differential pressure is the difference between the inlet and outlet pressure of the trap.
2. Recommended safety factor: at least 2.

Manufacturer

ISO 9001/ISO 14001

TLV CO., LTD.
Kakogawa, Japan

is approved by LRQA Ltd. to ISO 9001/14001

