

Solenoid - Spring

3/2

Ordering code

411.1.0.1.S

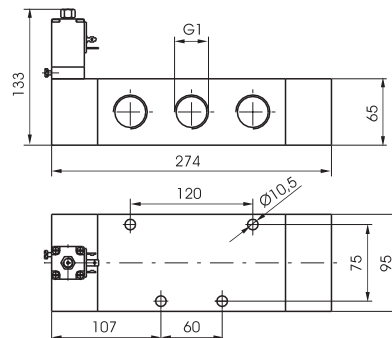
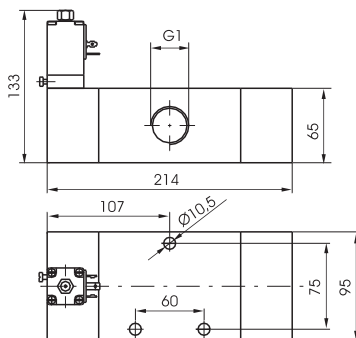
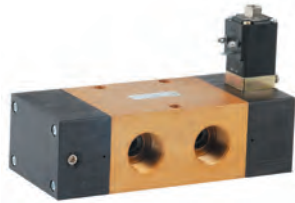
TYPE

32 = 3 ways

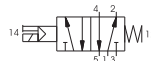
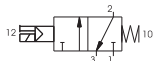
52 = 5 ways

SOLENOID CODE

S = See Solenoid valves "S" type, Series 300



Weight gr. 3400
Minimum working pressure 2,5 bar



Weight gr. 4300
Minimum working pressure 2,5 bar

Operational characteristic

Fluid	Max working pressure (bar)	Temperature °C	Flow rate at 6 bar with $\Delta p=1$ (Nl/min)	Orifice size (mm)	Working ports size
Filtered and lubricated air	10 bar	Min. -5°C Max. +50°C	6500 Nl/min	mm 20	G 1"

Solenoid - Differential

3/2

Ordering code

411.1.0.12.S

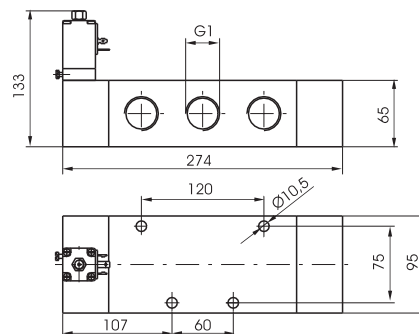
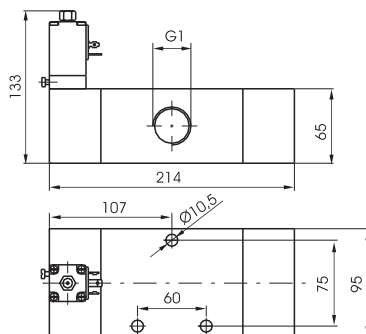
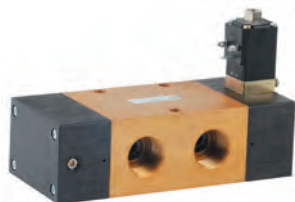
TYPE

32 = 3 ways

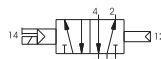
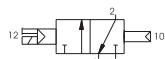
52 = 5 ways

SOLENOID CODE

S = See Solenoid valves "S" type, Series 300



Weight gr. 3400
Minimum working pressure 2,5 bar





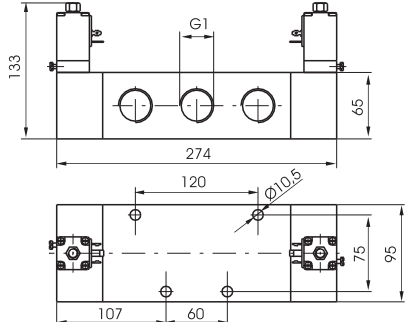
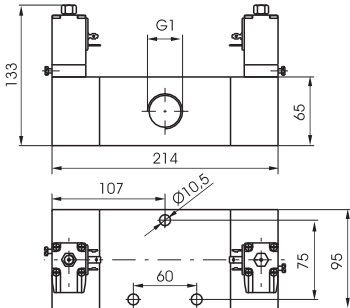
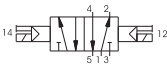
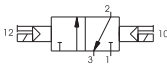
Weight gr. 4300
Minimum working pressure 2,5 bar

Operational characteristic


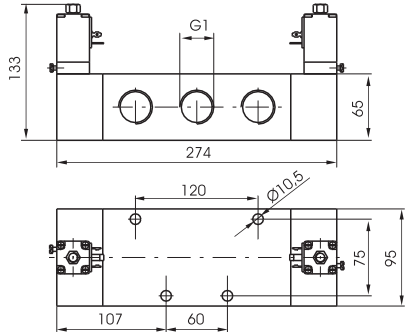
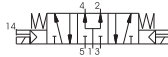
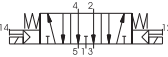
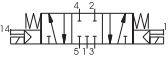
Fluid	Max working pressure (bar)	Temperature °C	Flow rate at 6 bar with $\Delta p=1$ (Nl/min)	Orifice size (mm)	Working ports size
Filtered and lubricated air	10 bar	Min. -5°C Max. +50°C	6500 Nl/min	mm 20	G 1"



3/2

Solenoid - Solenoid							3/2
Ordering code							
411.1.0.0.S							
T	TYPE						
	32 = 3 ways						
	52 = 5 ways						
	SOLENOID CODE						
S	S = See Solenoid valves "S" type, Series 300						
<div></div> <div></div> <div></div> <div>Weight gr. 3700 Minimum working pressure 2 bar</div> <div>Weight gr. 4600 Minimum working pressure 2 bar</div>							
Operational characteristic	Fluid	Max working pressure (bar)	Temperature °C		Flow rate at 6 bar with Δp=1 (NI/min)	Orifice size (mm)	Working ports size
	Filtered and lubricated air	10 bar	Min. -5°C	Max. +50°C	6500 NI/min	mm 20	G 1"

5/3

Solenoid - Solenoid							5/3
Ordering code							
411.53.F.0.0.S							
F	FUNCTION						
	31 = Closed centres						
	32 = Open centres						
S	SOLENOID CODE						
	S = See Solenoid valves "S" type, Series 300						
<div></div> <div></div> <div></div> <div>Weight gr. 4700 Minimum working pressure 3 bar</div>							
Operational characteristic	Fluid	Max working pressure (bar)	Temperature °C		Flow rate at 6 bar with Δp=1 (NI/min)	Orifice size (mm)	Working ports size
	Filtered and lubricated air	10 bar	Min. -5°C	Max. +50°C	6500 NI/min	mm 20	G 1"