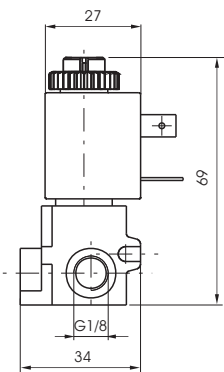
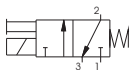


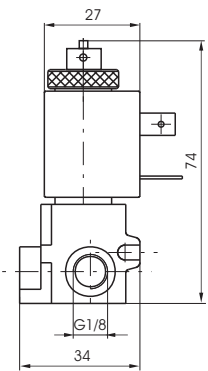
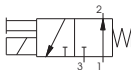
Miniature solenoid valve



Weight gr. 149

Normally Closed (N.C.)

Ordering code			Available voltage	
G 1/8"	M 5	TUBE Ø 4	Miniature solenoid	
305.M4	355.M4	345.M4	12 D.C.	Direct current
305.M5	355.M5	345.M5	24 D.C.	
305.M6	355.M6	345.M6	48 D.C.	
305.M9	355.M9	345.M9	24 D.C. (2 Watt)	
305.M17	355.M17	345.M17	24/50	Alternating current 50 Hz
305.M21	355.M21	345.M21	48/50	
305.M22	355.M22	345.M22	110/50	
305.M24	355.M24	345.M24	220/50	
305.M37	355.M37	345.M37	24/60	Alternating current 60 Hz
305.M39	355.M39	345.M39	110/60	
305.M41	355.M41	345.M41	220/60	
305.M56	355.M56	345.M56	24/50-60	Alternating current 50/60 Hz
305.M57	355.M57	345.M57	110/50-60	
305.M58	355.M58	345.M58	220/50-60	



Weight gr. 165

Normally Open (N.O.)

Ordering code			Available voltages	
G 1/8"	M 5	TUBE Ø 4 mm	Miniature solenoid	
305.M10/1	355.M10/1	345.M10/1	24 D.C. (8 Watt)	Direct current
305.M17/1	355.M17/1	345.M17/1	24/50	Alternating current 50 Hz
305.M21/1	355.M21/1	345.M21/1	48/50	
305.M22/1	355.M22/1	345.M22/1	110/50	
305.M24/1	355.M24/1	345.M24/1	220/50	
305.M37/1	355.M37/1	345.M37/1	24/60	Alternating current 60 Hz
305.M39/1	355.M39/1	345.M39/1	110/60	
305.M41/1	355.M41/1	345.M41/1	220/60	
305.M56/1	355.M56/1	345.M56/1	24/50-60	Alternating current 50/60 Hz
305.M57/1	355.M57/1	345.M57/1	110/50-60	
305.M58/1	355.M58/1	345.M58/1	220/50-60	